



TIKKOS RACING

MOTORCYCLE EXHAUST CATALOGUE

Exhaust Mufflers
Exhaust Headers
Heat Shield Protectors
S/Steel Springs
DB Killers

www.tikkosracing.com



MOTORCYCLE EXHAUST MUFFLERS



146166
S/Steel 304
Honda XR600 ALL models from '89-'96
Fit on original muffler

The exhaust header has a ridge less bend, providing a larger diameter opening, which translates to additional power and a better airflow

146167 For Yamaha
S/Steel 304
XT600 '87-'03 / XT600K '87-'03
XT600E '87-'03 / XT600XTE 3TB '87-'03
Fit on original muffler

The exhaust header has a ridge less bend, providing a larger diameter opening, which translates to additional power and a better airflow



170030
S/Steel 304 / Chrome Plated
Total Length = 500mm
Inlet Diameter = 45mm
Body Diameter = 76mm



170043
S/Steel 304 / Chrome Plated
Total Length = 500mm
Inlet Diameter = 45mm
Body Diameter = 60mm



TRM1-28 TRM1-54
TRM1-45 TRM1-60
TRM1-50

S/Steel 304
Body Length = 300mm
Inlet Diameter = 28/45/50/54/60mm
Body Diameter = 130x95mm



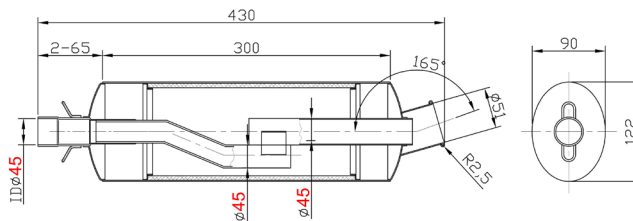
TRM2-50
TRM2-54
TRM2-60

S/Steel 304
Body Length = 200mm
Inlet Diameter = 50/54/60mm
Body Diameter = 130x95mm



TRM3-45
TRM3-50

S/Steel 304
Low Sound Construction
Body Length = 300mm
Inlet Diameter = 45/50mm
Body Diameter = 122x90mm



"Every motorcycle ride is a tiny vacation"
Anonymous

MOTORCYCLE EXHAUST MUFFLERS



170056-02 Right
170056-02L Left
 S/Steel 304 / Titanium body
"Twister" Perforated pipe
 Body Length = 435mm
 Inlet Diameter = 54mm
 Body Diameter = 122x97mm



170261
 S/Steel 304 / Carbon
"Rossi" style
 Body Length = 250mm
 Inlet Diameter = 60mm
 Body Diameter = 115mm
 With DB Killer TD=89mm



170261-01
 S/Steel 304 / Carbon
"Race F" style
 Body Length = 240mm
 Inlet Diameter = 60mm
 Body Diameter = 101mm
 With DB Killer TD = 64mm



170262
 S/Steel 304
"Rossi" style
 Body Length = 250mm
 Inlet Diameter = 60mm
 Body Diameter = 115mm
 With DB Killer TD=89mm



170262-01
 S/Steel 304
"Race F" style
 Body Length = 240mm
 Inlet Diameter = 60mm
 Body Diameter = 101mm
 With DB Killer TD=64mm



170307
 S/Steel 304
 Body Length = 400mm
 Inlet Diameter = 50mm
 Body Diameter = 120x98mm



175408
 S/Steel 304
Brush Polished
 Body Length = 270mm
 Inlet Diameter = 50mm



175798
 S/Steel 304
"Twister" Perforated pipe
 Body Length = 300mm
 Inlet Diameter = 50mm
 Body Diameter = 100mm

MOTORCYCLE EXHAUST MUFFLERS



TR004A-BK
S/Steel 304 / ALUMINUM
Body Length = 370mm
Inlet Diameter = 25mm
Body Diameter = 60mm



TR007AA
ALUMINUM / Double Layer
Body Length = 280mm
Inlet Diameter = 50mm
Body Diameter = 2x60mm



TR008AA
ALUMINUM / Double Layer
Body Length = 420mm
Inlet Diameter = 50mm
Body Diameter = 2x60mm



TR011SS
S/Steel 304
Body Length = 350mm
Inlet Diameter = 50mm
Body Diameter = 80mm



TR012AA
ALUMINUM / Single Layer
Body Length = 370mm
Inlet Diameter = 50mm
Body Diameter = 3x60mm



TR013SS02-03
S/Steel 304 / Mat Black
Cap HEXAGON
Body Length = 300mm
Inlet Diameter = 50mm



TR013SS02-21
S/Steel 304 / Aluminum Black
Cap HEXAGON
Body Length = 300mm
Inlet Diameter = 50mm



TR013SS02-6
S/Steel 304 / Mat Color
Cap HEXAGON
Body Length = 300mm
Inlet Diameter = 50mm



TR013SS03-6
S/Steel 304 / Aluminum Black
Cap HEXAGON
Body Length = 300mm
Inlet Diameter = 50mm



TR015A-S
S/Steel 304 / Aluminum
Body Length = 340mm
Inlet Diameter = 25mm
Body Diameter = 100mm



TR016SS
S/Steel 304 / DB Killer
Body Length = 350mm
Inlet Diameter = 50mm
Body Diameter = 76mm



TR016SS-R
S/Steel 304 / BURNED / DB Killer
Body Length = 350mm
Inlet Diameter = 50mm
Body Diameter = 76mm

MOTORCYCLE EXHAUST MUFFLERS



TR017SS-1
S/Steel 304 / Mat-Aluminum
Black Cap
Body Length = 300mm
Inlet Diameter = 50mm
Body Diameter = 100mm



TR020SS
S/Steel 304 / Mat
Body Length = 300mm
Inlet Diameter = 50mm
Body Diameter = Pentagon



TR022SS-1
S/Steel 304
Body Length = 400mm
Inlet Diameter = 50mm
Body Diameter = HEXAGON



TR030SS
Chrome Plated
Body Length = 410mm
Inlet Diameter = 38mm
Body Diameter = 64mm



TR031SS
Mild Steel / Chrome Plated
Body Length = 440mm
Inlet Diameter = 36-45mm
Body Diameter = 101mm



TR031SS-B
Mild Steel / Black Painted
Body Length = 440mm
Inlet Diameter = 36-45mm
Body Diameter = 101mm



TR032SS
S/Steel 304 / Mat Black
Body Length = 540mm
Inlet Diameter = 38-45mm
Body Diameter = 64mm



TR033SSL Left
TR033SSR Right
Chrome Plated
Body Length = 560mm
Inlet Diameter = 36-45mm
Body Diameter = 64mm



TR034CC-1
S/Steel 304 / Mat-Carbon
Cap HEXAGON
Body Length = 400mm
Inlet Diameter = 50mm



TR037A-S
S/Steel 304 / Aluminum
Body Length = 300mm
Inlet Diameter = 25mm
Body Diameter = 60mm



TR041SS-4
S/Steel 304 Mat / **Carbon Cover**
With DB Killer
Body Length = 350mm
Inlet Diameter = 50mm
Body Diameter = PENTAGON

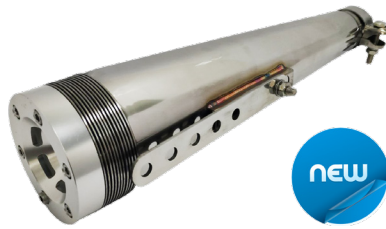


MOTORCYCLE EXHAUST MUFFLERS



TR043A-GY

S/Steel 304 / Anodized Aluminum
Body Length = 280mm
Inlet Diameter = 50mm
Body Diameter = 105 x 95mm



TR043SS-3

S/Steel 304 / 'Cone Style'
Body Length = 400mm
Inlet Diameter = 38mm-45mm
Body Diameter = 100mm



TR043SS220

S/Steel 304
Body Length = 220mm
Inlet Diameter = 50mm
Body Diameter = 105x95mm



TR044SS-1

Chrome Plated
Body Length = 440mm
Inlet Diameter = 36mm-45mm
Body Diameter = 80mm



TR045SS-1

Aluminum Cap / Chopper Style
Body Length = 460mm
Inlet Diameter = 38-45mm
Body Diameter = 80mm



TR046CC-1

Body Length = 290mm
Inlet Diameter = 50mm
Body Diameter = 100mm
Carbon Cap Cone



TR048SS-60

Body Length = 350mm
Inlet Diameter = 60mm
Body Diameter = 125x95mm
Stainless Steel / DB Killer



TR051SS

Body Length = 300mm
Inlet Diameter = 50mm
Body Diameter = 100mm
Stainless Steel / DB Killer



TR058C-51

Body Length = 300mm
Inlet Diameter = 50mm
Body Diameter = Hexagon
Stainless Steel / Carbon
With DB Killer



TR058C-CNC

Body Length = 300mm
Inlet Diameter = 50mm
Body Diameter = Hexagon
Aluminum / Carbon
With DB Killer



TR058SSCNC

Body Length = 300mm
Inlet Diameter = 50mm
Body Diameter = Hexagon
S/Steel / Aluminum
With DB Killer



TR059A-S

Body Length = 300mm
Inlet Diameter = 50mm
Body Diameter = 100mm
Stainless Steel / Aluminum
With DB Killer

MOTORCYCLE EXHAUST MUFFLERS



TR062CC-1
 Body Length = 330mm
 Inlet Diameter = 50mm
 Body Diameter = HEXAGON
 Stainless Steel Mat - Carbon Cap



TR064SS
 Body Length = 330mm
 Diameter = 50mm
 Body Diameter = 90mm
 Stainless Steel / With DB Killer



TR064SS-02
 Body Length = 400mm
 Diameter = 50mm
 Body Diameter = 90mm
 Stainless Steel / With DB Killer



TR064SS-04A
 Body Length = 200mm
 Inlet Diameter = 50mm
 Body Diameter = Hexagon
 Carbon / With DB Killer



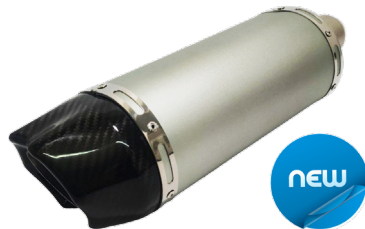
TR064SS-04B
 Body Length = 200mm
 Inlet Diameter = 50mm
 Body Diameter = 110mm
 Stainless Steel Burned



TR0644SS-04
 Body Length = 200mm
 Inlet Diameter = 50mm
 Body Diameter = 110mm
 Stainless Steel



TR064SS-06
 Body Length = 320mm
 Inlet Diameter = 50mm
 Body Diameter = Hexagon
 Stainless Steel / With DB Killer



TR065CC-1
 Body Length = 330mm
 Inlet Diameter = 50mm
 Body Diameter = 125x100mm
 Aluminum Silver / Carbon Cap
 With DB Killer



TR065CC-3
 Body Length = 300mm
 Inlet Diameter = 50mm
 Body Diameter = 100mm
 S/Steel / Aluminum
 With DB Killer



TR065SS
 Body Length = 320mm
 Inlet Diameter = 50mm
 Body Diameter = 115x95mm
 Stainless Steel / With DB Killer



TR065SS-3
 Body Length = 300mm
 Inlet Diameter = 50mm
 Body Diameter = 90mm
 S/Steel Burned



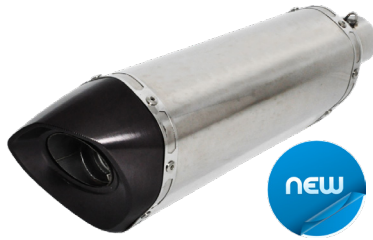
TR066SS
 Body Length = 270mm
 Inlet Diameter = 50mm
 Body Diameter = 100mm
 S/Steel / Aluminum
 With DB Killer

MOTORCYCLE EXHAUST MUFFLERS



TR068SS

Body Length = 160mm
Inlet Diameter = 50mm
Body Diameter = 90mm
Stainless Steel



TR069SS-T

Body Length = 300mm
Inlet Diameter = 50mm
Body Diameter = Hexagon
**S/Steel / Aluminum Black Cap
With DB Killer**



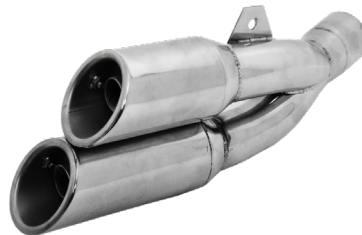
TR073SS-1

Body Length = 490mm
Inlet Diameter = 38mm-45mm
Body Diameter = 76mm
Chromed 'Bullet Style' Quiet



TR074SS-01

Body Length = 240mm
Inlet Diameter = 50mm
Body Diameter = 105x80mm
S/Steel / With DB Killer



TR078SS

Body Length = 300mm
Inlet Diameter = 50mm
Body Diameter = 2x64mm
S/Steel / With DB Killer



TR080SS

Body Length = 220mm
Inlet Diameter = 50mm
Body Diameter = Hexagon
**S/Steel / Carbon Cap
With DB Killer**



TR080SS-02

Body Length = 220mm
Inlet Diameter = 50mm
Body Diameter = Hexagon
**S/Steel / Aluminum
With DB Killer**



TR080SS-03

Body Length = 220mm
Inlet Diameter = 50mm
Body Diameter = Hexagon
Carbon / With DB Killer



TRW219S

For Honda Dio 50
S/Steel / Aluminum

MOTORCYCLE SPARE PARTS

S/Steel Springs



TR-02
S/Steel Spring Hanger



SHM-1
S/Steel hanger
Body Length = 25mm



SPR65
S/Steel Spring
Body Length = 65mm



TR1002
S/Steel Spring
Body Length = 75mm



TR-H009
S/Steel Spring
with Hanger



TR-H027-1
S/Steel spring with
Plastic Cover
Body Length = 85mm

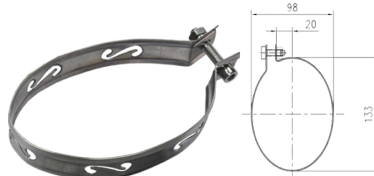


TR-H027-2
S/Steel spring with
Plastic Cover
Body Length = 60mm

S/Steel Clamps



TR1001
Stainless Steel Clamp
Body Diameter = 130x85mm



TR1001-OC
Stainless Steel Clamp
Body Diameter = 133x98mm
Off Center



TR-H006
S/Steel Clamp ϕ 100



TR-H007
S/Steel Clamp 130x100



TR-SR
High Temperature Silicone
rubber for Moto Clamps
Length = 345mm x 32mm

MOTORCYCLE SPARE PARTS

DeciBel Killers (DB Killer)



DBK42-80
DBK45-80
DBK48-80
 Body Length = 80mm
 Inlet Diameter = 42/45/48mm



DBK35-135 **DBK48-135**
DBK42-135 **DBK60-135**
DBK45-135
 Body Length = 135mm
 Inlet Diameter = 35/42/45/48/60mm



45K1-64
 Body Length = 155mm
 Inlet Diameter = 45mm
 Body Diameter = 60mm
 Fits 170261-01 & 170262-01



TD-54
 Body Length = 150mm
 Inlet Diameter = 30mm
 Body Diameter = 52mm
 Fits TRM1-54 & TRM2-54

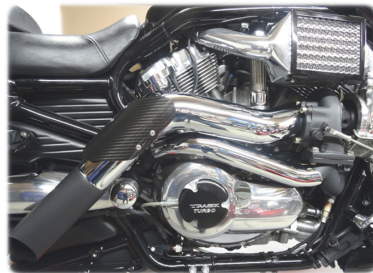


45K1-64
 Body Length = 100mm
 Rhombus Size = 70x45mm

Motorcycle Exhaust Heat Protector



255092
 Motorcycle Exhaust Heat
 Protector Cover Carbon Fiber



TR-H003R
 S/Steel Heat Protector Cover
 Burned - **Rainbow**
 Body Diameter = 145x70mm



TR-H003S
 S/Steel Heat Protector Cover
 Silver
 Body Diameter = 145x70mm



TR-H004
 Heat Protector Cover
 for Retro Bikes - Black
 Body Diameter = 183x70mm



TR-H015
 Carbon Heat Protector Cover
 Curved - Glossy
 Body Diameter = 195x75mm



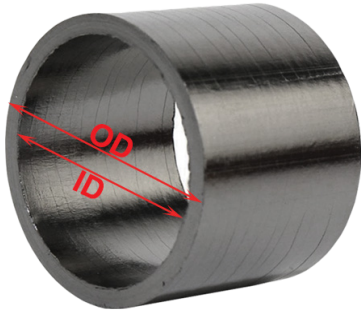
TR-H015A
 Carbon Heat Protector Cover
 Curved - Matt
 Body Diameter = 195x75mm



TR-H015E
 Carbon Heat Protector Cover
 Body Diameter = 130x60mm

MOTORCYCLE SPARE PARTS

Graphite Exhaust Seals



- GS22-30** ID:22mm OD:30mm
- GS29-35** ID:29mm OD:35mm
- GS30-35** ID:30mm OD:35mm
- GS32-38** ID:32mm OD:38mm
- GS32-40** ID:32mm OD:40mm
- GS35-40** ID:35mm OD:40mm
- GS35-42** ID:35mm OD:42mm

- GS38-46** ID:38mm OD:46mm
- GS38-48** ID:38mm OD:48mm
- GS39-45** ID:39mm OD:45mm
- GS45-50** ID:45mm OD:50mm
- GS50-55** ID:50mm OD:55mm
- GS55-60** ID:55mm OD:60mm

S/Steel T-Bolt Clamps



- SC32-35** Diameter: 32-35mm
- SC36-39** Diameter: 36-39mm
- SC40-43** Diameter: 40-43mm
- SC44-47** Diameter: 44-47mm
- SC48-51** Diameter: 48-51mm
- SC52-55** Diameter: 52-55mm

- SC56-59** Diameter: 56-59mm
- SC60-63** Diameter: 60-63mm
- SC64-67** Diameter: 64-67mm
- SC68-73** Diameter: 68-73mm
- SC74-79** Diameter: 74-79mm
- SC80-85** Diameter: 80-85mm

