



TIKKOS RACING

MOTORCYCLE EXHAUST CATALOGUE

Exhaust Mufflers
Exhaust Headers
Heat Shield Protectors
S/Steel Springs
DB Killers

www.tikkosracing.com



MOTORCYCLE EXHAUST MUFFLERS



146166

S/Steel 304

Honda XR600 ALL models from '89-'96

Fit on original muffler

The exhaust header has a ridge less bend, providing a larger diameter opening, which translates to additional power and a better airflow



146167 For Yamaha

S/Steel 304

XT600 '87-'03 / XT600K '87-'03

XT600E '87-'03 / XT600XTE 3TB '87-'03

Fit on original muffler

The exhaust header has a ridge less bend, providing a larger diameter opening, which translates to additional power and a better airflow



170030

S/Steel 304 / Chrome Plated

Total Length = 500mm

Inlet Diameter = 45mm

Body Diameter = 76mm



170043

S/Steel 304 / Chrome Plated

Total Length = 500mm

Inlet Diameter = 45mm

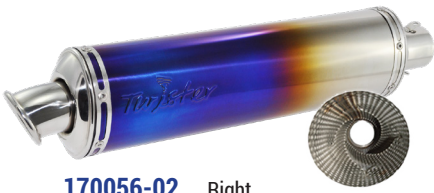
Body Diameter = 60mm



"Every motorcycle ride is a tiny vacation"

Anonymous

MOTORCYCLE EXHAUST MUFFLERS



170056-02 Right
170056-02L Left
S/Steel 304 / Titanium body
"Twister" Perforated pipe
Body Length = 435mm
Inlet Diameter = 54mm
Body Diameter = 122x97mm



170261
S/Steel 304 / Carbon
"Rossi" style
Body Length = 250mm
Inlet Diameter = 60mm
Body Diameter = 115mm
With DB Killer TD=89mm



170261-01
S/Steel 304 / Carbon
"Race F" style
Body Length = 240mm
Inlet Diameter = 60mm
Body Diameter = 101mm
With DB Killer TD = 64mm



170262
S/Steel 304
"Rossi" style
Body Length = 250mm
Inlet Diameter = 60mm
Body Diameter = 115mm
With DB Killer TD=89mm



170262-01
S/Steel 304
"Race F" style
Body Length = 240mm
Inlet Diameter = 60mm
Body Diameter = 101mm
With DB Killer TD=64mm



170307
S/Steel 304
Body Length = 400mm
Inlet Diameter = 50mm
Body Diameter = 120x98mm



175408
S/Steel 304
Brush Polished
Body Length = 270mm
Inlet Diameter = 50mm



175798
S/Steel 304
"Twister" Perforated pipe
Body Length = 300mm
Inlet Diameter = 50mm
Body Diameter = 100mm

MOTORCYCLE EXHAUST MUFFLERS



TR004A-BK

S/Steel 304 / ALUMINUM
Body Length = 370mm
Inlet Diameter = 25mm
Body Diameter = 60mm



TR007AA

ALUMINUM / Double Layer
Body Length = 280mm
Inlet Diameter = 50mm
Body Diameter = 2x60mm



TR008AA

ALUMINUM / Double Layer
Body Length = 420mm
Inlet Diameter = 50mm
Body Diameter = 2x60mm



TR011SS

S/Steel 304
Body Length = 350mm
Inlet Diameter = 50mm
Body Diameter = 80mm



TR012AA

ALUMINUM / Single Layer
Body Length = 370mm
Inlet Diameter = 50mm
Body Diameter = 3x60mm



TR013SS02-03

S/Steel 304 / Mat Black
Cap HEXAGON
Body Length = 300mm
Inlet Diameter = 50mm



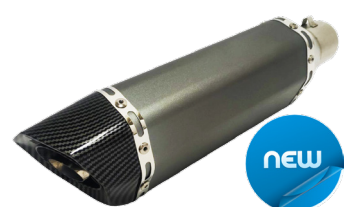
TR013SS02-21

S/Steel 304 / Aluminum Black
Cap HEXAGON
Body Length = 300mm
Inlet Diameter = 50mm



TR013SS02-6

S/Steel 304 / Mat Color
Cap HEXAGON
Body Length = 300mm
Inlet Diameter = 50mm



TR013SS03-6

S/Steel 304 / Aluminum Black
Cap HEXAGON
Body Length = 300mm
Inlet Diameter = 50mm



TR015A-S

S/Steel 304 / Aluminum
Body Length = 340mm
Inlet Diameter = 25mm
Body Diameter = 100mm



TR016SS

S/Steel 304 / DB Killer
Body Length = 350mm
Inlet Diameter = 50mm
Body Diameter = 76mm



TR016SS-R

S/Steel 304 / BURNED / DB Killer
Body Length = 350mm
Inlet Diameter = 50mm
Body Diameter = 76mm

MOTORCYCLE EXHAUST MUFFLERS



TR017SS-1

S/Steel 304 / Mat-Aluminum
Black Cap
 Body Length = 300mm
 Inlet Diameter = 50mm
 Body Diameter = 100mm



TR020SS

S/Steel 304 / Mat
 Body Length = 300mm
 Inlet Diameter = 50mm
 Body Diameter = Pentagon



TR022SS-1

S/Steel 304
 Body Length = 400mm
 Inlet Diameter = 50mm
 Body Diameter = HEXAGON



TR030SS

Chrome Plated
 Body Length = 410mm
 Inlet Diameter = 38mm
 Body Diameter = 64mm



TR031SS

Mild Steel / Chrome Plated
 Body Length = 440mm
 Inlet Diameter = 36-45mm
 Body Diameter = 101mm



TR031SS-B

Mild Steel / Black Painted
 Body Length = 440mm
 Inlet Diameter = 36-45mm
 Body Diameter = 101mm



TR032SS

S/Steel 304 / Mat Black
 Body Length = 540mm
 Inlet Diameter = 38-45mm
 Body Diameter = 64mm



TR033SSL Left

TR033SSR Right

Chrome Plated
 Body Length = 560mm
 Inlet Diameter = 36-45mm
 Body Diameter = 64mm



TR034CC-1

S/Steel 304 / Mat-Carbon
Cap HEXAGON
 Body Length = 400mm
 Inlet Diameter = 50mm



TR037A-S

S/Steel 304 / Aluminum
 Body Length = 300mm
 Inlet Diameter = 25mm
 Body Diameter = 60mm



TR041A-BK

S/Steel 304 / Aluminum
 Material ABS / **With DB Killer**
 Body Length = 300mm
 Inlet Diameter = 38mm
 Body Diameter = 100 x 90mm

MOTORCYCLE EXHAUST MUFFLERS



Carbon Look

TR041A-CC

S/Steel 304 / Aluminum
Material ABS / With DB Killer
Body Length = 300mm
Inlet Diameter = 38mm
Body Diameter = 100 x 90mm



TR041C

Carbon / Material ABS
With DB Killer
Body Length = 300mm
Inlet Diameter = 38mm
Body Diameter = 100x90mm



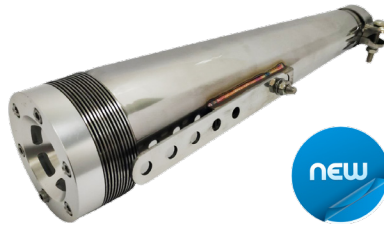
TR041SS-4

S/Steel 304 Mat / Carbon Cover
With DB Killer
Body Length = 350mm
Inlet Diameter = 50mm
Body Diameter = PENTAGON



TR043A-GY

S/Steel 304 / Anodized Aluminum
Body Length = 280mm
Inlet Diameter = 50mm
Body Diameter = 105 x 95mm



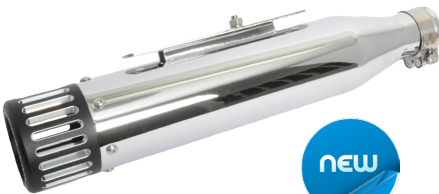
TR043SS-3

S/Steel 304 / 'Cone Style'
Body Length = 400mm
Inlet Diameter = 38mm-45mm
Body Diameter = 100mm



TR043SS220

S/Steel 304
Body Length = 220mm
Inlet Diameter = 50mm
Body Diameter = 105x95mm



TR044SS-1

Chrome Plated
Body Length = 440mm
Inlet Diameter = 36mm-45mm
Body Diameter = 80mm



TR045SS-1

Aluminum Cap / Chopper Style
Body Length = 460mm
Inlet Diameter = 38-45mm
Body Diameter = 80mm



TR046CC-1

Body Length = 290mm
Inlet Diameter = 50mm
Body Diameter = 100mm
Carbon Cap Cone



TR048SS-60

Body Length = 350mm
Inlet Diameter = 60mm
Body Diameter = 125x95mm
Stainless Steel / DB Killer



TR051SS

Body Length = 300mm
Inlet Diameter = 50mm
Body Diameter = 100mm
Stainless Steel / DB Killer



TR058C-51

Body Length = 300mm
Inlet Diameter = 50mm
Body Diameter = Hexagon
Stainless Steel / Carbon
With DB Killer

MOTORCYCLE EXHAUST MUFFLERS



TR058C-CNC

Body Length = 300mm
Inlet Diameter = 50mm
Body Diameter = Hexagon
Aluminum / Carbon
With DB Killer



TR058SSCNC

Body Length = 300mm
Inlet Diameter = 50mm
Body Diameter = Hexagon
S/Steel / Aluminum
With DB Killer



TR059A-S

Body Length = 300mm
Inlet Diameter = 50mm
Body Diameter = 100mm
Stainless Steel / Aluminum
With DB Killer



TR061A-T

Body Length = 430mm
Inlet Diameter = 60mm
Body Diameter = 110mm
Stainless Steel / Aluminum
With DB Killer



TR062CC-1

Body Length = 330mm
Inlet Diameter = 50mm
Body Diameter = HEXAGON
Stainless Steel Mat-Carbon Cap



TR063SS

Body Length = 300mm
Inlet Diameter = 38mm
Body Diameter = 100x90mm
Stainless Steel / Material ABS
With DB Killer



TR064SS

Body Length = 330mm
Diameter = 50mm
Body Diameter = 90mm
Stainless Steel / With DB Killer



TR064SS-02

Body Length = 400mm
Diameter = 50mm
Body Diameter = 90mm
Stainless Steel / With DB Killer



TR064SS-04A

Body Length = 200mm
Inlet Diameter = 50mm
Body Diameter = Hexagon
Carbon / With DB Killer



TR064SS-04B

Body Length = 200mm
Inlet Diameter = 50mm
Body Diameter = 110mm
Stainless Steel Burned



TR0644SS-04

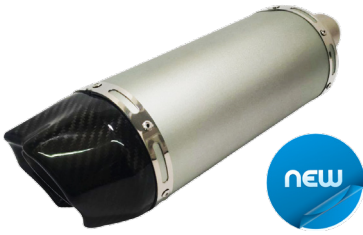
Body Length = 200mm
Inlet Diameter = 50mm
Body Diameter = 110mm
Stainless Steel



TR064SS-06

Body Length = 200mm
Inlet Diameter = 50mm
Body Diameter = Hexagon
Stainless Steel / With DB Killer

MOTORCYCLE EXHAUST MUFFLERS



TR065CC-1

Body Length = 330mm
Inlet Diameter = 50mm
Body Diameter = 125x100mm
Aluminum Silver / Carbon Cap
With DB Killer



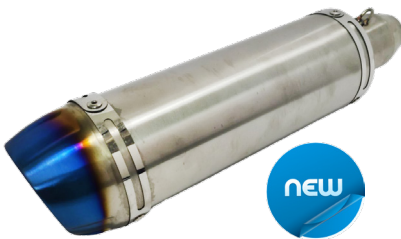
TR065CC-3

Body Length = 300mm
Inlet Diameter = 50mm
Body Diameter = 100mm
S/Steel / Aluminum
With DB Killer



TR065SS

Body Length = 320mm
Inlet Diameter = 50mm
Body Diameter = 115x95mm
Stainless Steel / With DB Killer



TR065SS-3

Body Length = 300mm
Inlet Diameter = 50mm
Body Diameter = 90mm
S/Steel Burned



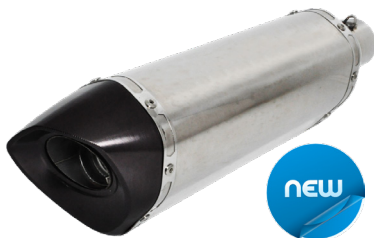
TR066SS

Body Length = 270mm
Inlet Diameter = 50mm
Body Diameter = 100mm
S/Steel / Aluminum
With DB Killer



TR068SS

Body Length = 160mm
Inlet Diameter = 50mm
Body Diameter = 90mm
Stainless Steel



TR069SS-T

Body Length = 300mm
Inlet Diameter = 50mm
Body Diameter = Hexagon
S/Steel / Aluminum Black Cap
With DB Killer



TR073SS-1

Body Length = 490mm
Inlet Diameter = 38mm-45mm
Body Diameter = 76mm
Chromed 'Bullet Style' Quiet



TR074SS-01

Body Length = 240mm
Inlet Diameter = 50mm
Body Diameter = 105x80mm
S/Steel / With DB Killer



TR078SS

Body Length = 300mm
Inlet Diameter = 50mm
Body Diameter = 2x64mm
S/Steel / With DB Killer



TR080SS

Body Length = 220mm
Inlet Diameter = 50mm
Body Diameter = Hexagon
S/Steel / Carbon Cap
With DB Killer



TR080SS-02

Body Length = 220mm
Inlet Diameter = 50mm
Body Diameter = Hexagon
S/Steel / Aluminum
With DB Killer

MOTORCYCLE EXHAUST MUFFLERS



TR080SS-03

Body Length = 220mm
Inlet Diameter = 50mm
Body Diameter = Hexagon
Carbon / With DB Killer



TRW219S

For Honda Dio 50
S/Steel / Aluminum



TRM1-28 TRM1-50 TRM1-38 TRM1-54 TRM1-45 TRM1-60

S/Steel 304
Body Length = 300mm
Inlet Diameter = 28/38/45/50/54/60mm
Body Diameter = 130x95mm



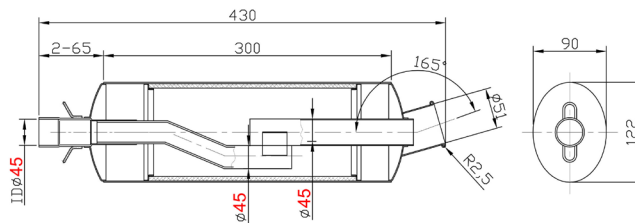
TRM2-50 TRM2-54 TRM2-60

S/Steel 304
Body Length = 200mm
Inlet Diameter = 50/54/60mm
Body Diameter = 130x95mm



TRM3-45 TRM3-50

S/Steel 304
Low Sound Construction
Body Length = 300mm
Inlet Diameter = 45/50mm
Body Diameter = 122x90mm



MOTORCYCLE SPARE PARTS

S/Steel Springs



TR-02
S/Steel Spring Hanger



SPR65
S/Steel Spring
Body Length = 65mm



TR1002
S/Steel Spring
Body Length = 75mm



TR-H009
S/Steel Spring
with Hanger



TR-H027-1
S/Steel spring with
Plastic Cover
Body Length = 85mm

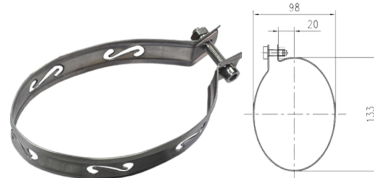


TR-H027-2
S/Steel spring with
Plastic Cover
Body Length = 60mm

S/Steel Clamps



TR1001
Stainless Steel Clamp
Body Diameter = 130x85mm



TR1001-OC
Stainless Steel Clamp
Body Diameter = 133x98mm
Off Center



TR-H006
S/Steel Clamp $\Phi 100$

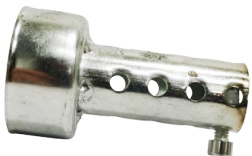


TR-H007
S/Steel Clamp 130x100



TR-SR
High Temperature Silicone
rubber for Moto Clamps
Length = 345mm x 32mm

DeciBel Killers (DB Killer)



DBK42-80
DBK45-80
DBK48-80
Body Length = 80mm
Inlet Diameter = 42/45/48mm



DBK35-135 **DBK48-135**
DBK42-135 **DBK60-135**
DBK45-135
Body Length = 135mm
Inlet Diameter = 35/42/45/48/60mm

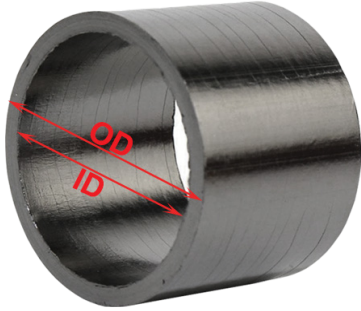


45K1-64
Body Length = 155mm
Inlet Diameter = 45mm
Body Diameter = 60mm
Fits 170261-01 & 170262-01



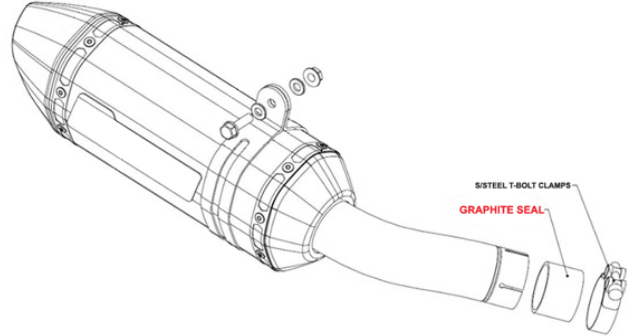
TD-54
Body Length = 150mm
Inlet Diameter = 30mm
Body Diameter = 52mm
Fits TRM1-54 & TRM2-54

Graphite Exhaust Seals



GS22-30 ID:22mm OD:30mm
GS29-35 ID:29mm OD:35mm
GS30-35 ID:30mm OD:35mm
GS32-38 ID:32mm OD:38mm
GS32-40 ID:32mm OD:40mm
GS35-40 ID:35mm OD:40mm
GS35-42 ID:35mm OD:42mm

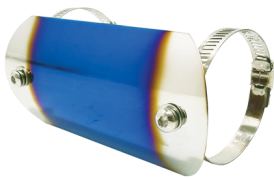
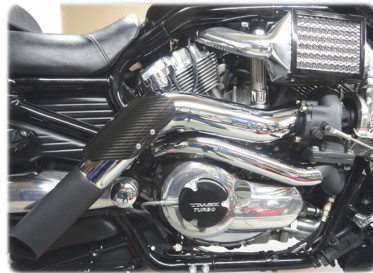
GS38-46 ID:38mm OD:46mm
GS38-48 ID:38mm OD:48mm
GS39-45 ID:39mm OD:45mm
GS45-50 ID:45mm OD:50mm
GS50-55 ID:50mm OD:55mm
GS55-60 ID:55mm OD:60mm



Motorcycle Exhaust Heat Protector



255092
 Motorcycle Exhaust Heat
 Protector Cover Carbon Fiber



TR-H003R
 S/Steel Heat Protector Cover
 Burned - **Rainbow**
 Body Diameter = 145x70mm



TR-H003S
 S/Steel Heat Protector Cover
 Silver
 Body Diameter = 145x70mm



TR-H004
 Heat Protector Cover
 for Retro Bikes - Black
 Body Diameter = 183x70mm



TR-H015
 Carbon Heat Protector Cover
 Curved - Glossy
 Body Diameter = 195x75mm



TR-H015A
 Carbon Heat Protector Cover
 Curved - Matt
 Body Diameter = 195x75mm



TR-H015E
 Carbon Heat Protector Cover
 Body Diameter = 130x60mm